

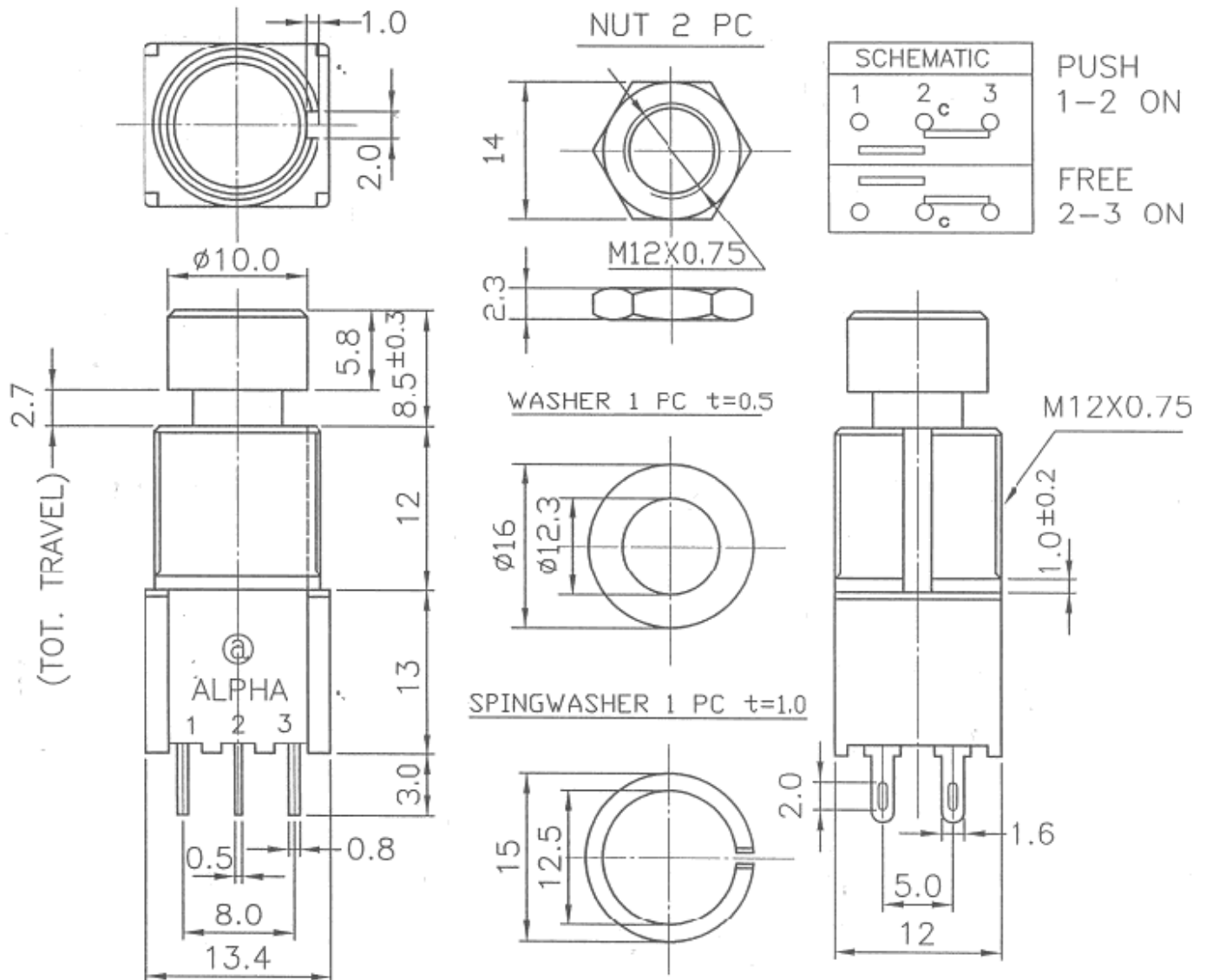
# FOOT SWITCH

MODEL

SF12020F-0202-20R-M-011

## SPECIFICATIONS

Rating	AC125V 6A AC250V 3A DC30V 4A
Contact Resistance	50mΩ Max. Silver contacts
Insulation Resistance	DC500V-100 MΩ Min.
Withstand Voltage	AC1000V-1 Minute
Operating Force	2.8±0.8Kgf
Life Cycles	20,000 Cycles
Sizes (m.m)	As Following Drawing



NOTE: 1. TOLERANCES UNLESS OTHERWISE SPECIFIED: ±0.3mm  
 2. FUNCTION: MOMENTARY

Date

2004.07.09

DWN

傳  
97.1.4  
仕維

CHKD

王  
2004.1.04  
茂松

APP'D

楊  
2004.1.4  
孟鑫

TAIWAN ALPHA ELECTRONIC CO., LTD.